



FILTRATION SPECIFICATIONS

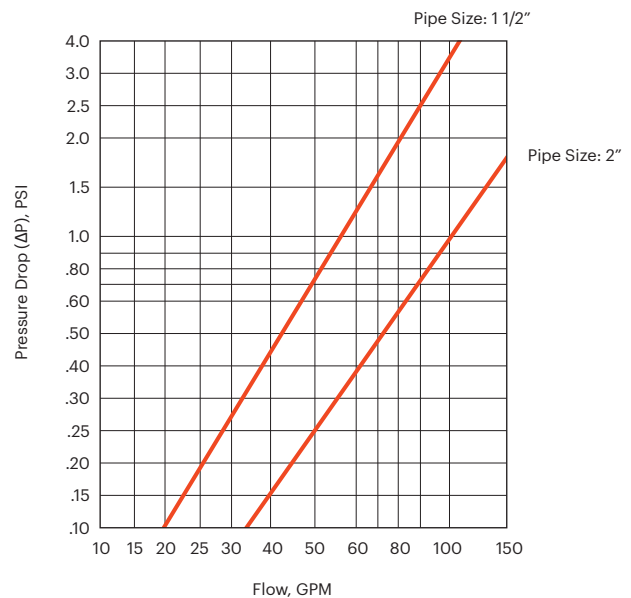
Filter: Model LCO Filter Housing

Low cost filter housings for flow rates to 100 gpm*

These high-capacity bag filters are low in cost and offer high dirt holding capacity. Constructed of carbon steel or 304 stainless steel, they use a clamp cover that is easily removed, reducing time spent on cleaning and bag replacement. LCO housings utilize our unistyle design offering the option of a side or bottom outlet. Piping options are 1-1/2 inch or 2 inch side inlet and outlet, with a 1-1/2 inch or 2 inch plugged drain. The outlet can easily be changed to the bottom by merely moving the plug from the drain to the side outlet.

FEATURES

- Permanently piped housings are opened without special tools
- Quick opening cover
- Carbon or 304 stainless steel housings
- Large area bag and basket for greater dirt-holding capacity
- O-ring seals: Buna N, EPR, and Fluoroelastomer
- Adjustable-height tripod legs
- 125 PSI rated housing
- Bag surface area is 5.6 square feet (LCO8) and 2.0 square feet (LCO6)
- Uses number 12 size bags (LCO8) and number 8 size bags (LCO6)
- 2 inch NPT ports (LCO8)



Filter bags are specified and sold separately.

*Based on housing only. Fluid viscosity, filter bag used, and expected dirt loading should be considered when sizing a filter.



Model LCO Housing Code - How to Order

CONFIGURE YOUR PART NUMBER (EXAMPLE: LCO8-30-2P-*-125-S-B-PB)



A	MODEL NUMBER	CODE
	MODEL 6	LCO6
	MODEL 8	LCO8

B	BASKET SIZE	CODE
	18 INCH (MODEL 6)	18
	30 INCH (MODEL 8)	30

C	PIPE SIZE	CODE
	1 1/2-INCH FEMALE NPT (MODEL 6)	1 1/2P
	2-INCH FEMALE NPT (MODEL 8)	2P

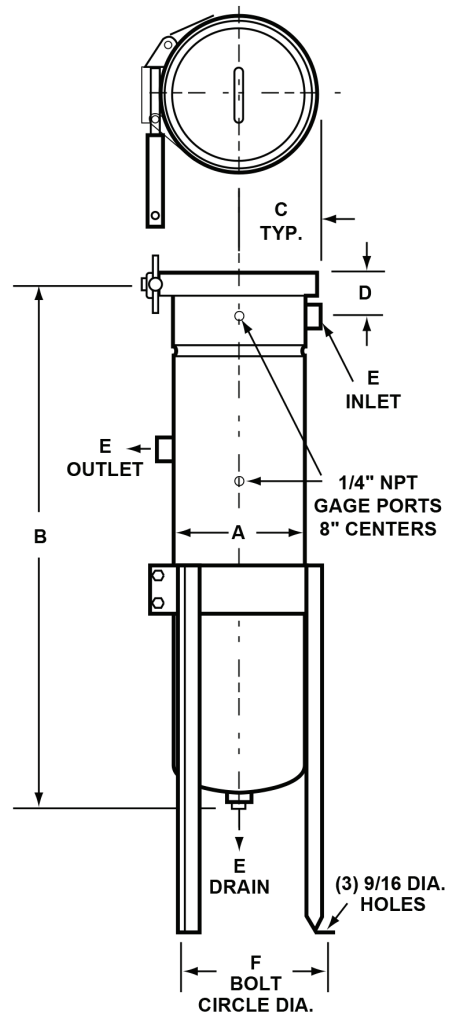
D	OUTLET STYLE	CODE
	SIDE / BOTTOM UNISTYLE	*

E	PRESSURE RATING	CODE
	125 PSI	125

F	HOUSING MATERIAL	CODE
	CARBON STEEL	C
	304 STAINLESS STEEL	S

G	COVER SEAL	CODE
	BUNA N	B
	ETHYLENE PROPYLENE	E
	FLUOROELASTOMER	V

H	BASKET TYPE	CODE
	FILTER BAG BASKET	PB



MODEL NUMBER & DIM. A	B	C	D	E	F	PSI	WEIGHT LB (APPROX)
6 (27.7)	28.0	4.3	3.0	1.5	9.5	125	50
8 (35.0)	39.2	6.0	4.2	2.0	12.0	125	70

Dimensions are reference only and should not be used for hard plumbing. Consult factory for certified drawings.